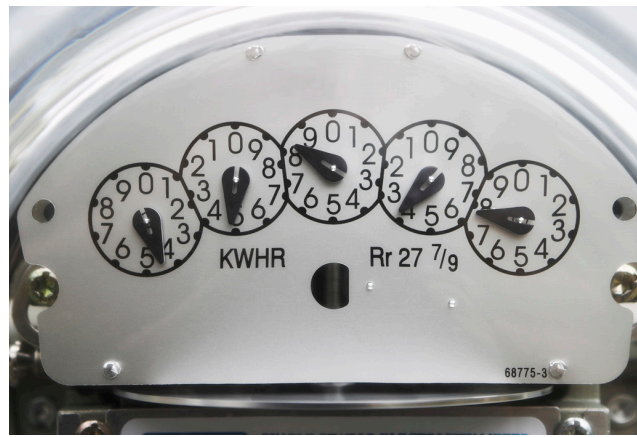
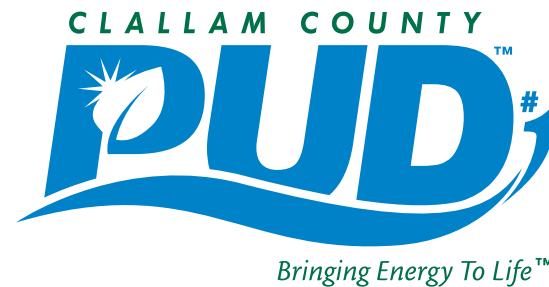
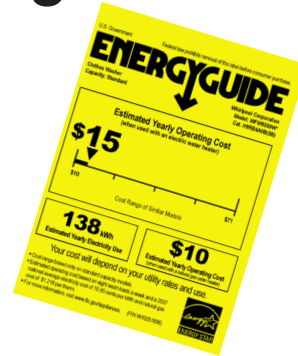


Health & Beauty	Typical Wattage (Watts)	Avg Hrs Usage/ Month	Avg kWh/ Month	Typical Cost/ Month
Adjustable Bed	85	120	10.2	\$0.70
Air Purifier	100	480	48.9	\$3.37
Air Purifier, Energy Star	30	480	16.3	\$1.12
Baby Monitor	1	720	0.7	\$0.05
Dialysis Machine	1,450	65	94.2	\$6.50
Electric Blanket	100	60	6.0	\$0.41
Hair Dryer	1,500	4.5	6.75	\$0.47
Heat Lamp	250	20	5.0	\$0.35
Heating Pad	75	20	1.5	\$0.10
Humidifier	75	60	4.5	\$0.31
Nebulizer	1,035	45	47.0	\$3.24
O <sub>2</sub> Concentrator	460	720	331.0	\$22.84
Treadmill 2 H.P.	1,500	15	22.5	\$1.55
Vaporizer	750	120	90.0	\$6.21

Tools & Equipment	Typical Wattage (Watts)	Avg Hrs Usage/ Month	Avg. kWh/ Month	Typical Cost/ Month
Compressor-1HP	600	20	12.0	\$0.83
Bug Zapper	40	300	12.0	\$0.83
3/8" Drill	400	10	4.0	\$0.28
Bench Grinder	600	2	1.2	\$0.08
Cordless Tool	34	90	3.1	\$0.21
Lawn Mower	1,500	5	7.5	\$0.55
Motor - 1 HP	600	20	12.0	\$0.83
Sander, Belt	300	5	1.5	\$0.10
Sander, Orbital	500	5	2.5	\$0.17
Saw, Circular	1,000	5	5.0	\$0.35
Saw, 12" Chain	440	8	3.5	\$0.24
Saw, Reciprocating	750	5	3.8	\$0.26
Saw -- Saber	400	5	2.0	\$0.14
Saw -- 10" Table	1,800	5	9.0	\$0.62
Soldering Gun	600	10	6.0	\$0.41



## Residential Appliance Energy Usage Guide



[www.clallampud.net](http://www.clallampud.net)

This guide provides typical wattages for many household appliances as well as monthly usage costs at an electric rate of \$0.069/kilowatt-hour (kWh). Today's appliances are generally more energy efficient than those made five or more years ago. For the most efficient appliances, look for the ENERGY STAR® label and compare ENERGY GUIDES™. To calculate usage costs on your own, simply use the below formulas:

$$\text{(Watts/1000)} \times \text{Hours Used} = \text{kWh}$$

$$\text{kWh} \times \text{Electrical Rate} = \text{Usage Cost}$$

Kitchen Small Appliances	Typical Wattage (Watts)	Avg. Hrs Usage/ Month	Avg. kWh/ Month	Typical Cost/ Month
Blender	300	2	0.6	\$0.04
Bread Maker	500	7	3.5	\$0.24
Can Opener	100	1	0.1	\$0.01
Coffee Maker	1,000	15	15.0	\$1.04
Espresso Maker	360	7.5	2.7	\$0.19
Deep Fat Fryer	1,500	3	4.0	\$0.28
Electric Fry Pan	1,500	10	15.0	\$1.04
Electric Grill - Counter Top	1,425	8	11.0	\$0.76
Electric Kettle	1,200	10	12.0	\$0.83
Food Processor	360	5	1.8	\$0.12
Microwave -- 0.75 cu. Ft.	600	10	6.0	\$0.41
Microwave -- 1.25 cu. Ft.	1,500	10	15.0	\$1.04
Mixer - Stand	100	3	0.3	\$0.02
Popcorn Maker	1,400	1	1.4	\$0.10
Range Hood w/ Light & Fan	185	30	5.6	\$0.39
Rice Cooker	500	4	2.0	\$0.14
Toaster	1,000	3	3.0	\$0.21
Toaster Oven	1,500	15	18.0	\$1.24
Waffle Iron	1,200	4	4.8	\$0.33
Water Cooler w/Hot Water	400	720	72.0	\$4.97

Kitchen Large Appliances:	Typical Wattage (Watts)	Avg. Hrs Usage/ Month	Avg. kWh/ Month	Typical Cost/ Month
Dishwasher	825	38	27.1	\$1.87
Dishwasher: Energy Star	625	45	21.4	\$1.48
Electric Oven	1,100	15	16.5	\$1.14
Electric Oven: Cleaning Mode	7,500	3	22.5	\$1.55
Electric Oven & Range w/6" Range Element	1,400	15	21.0	\$1.45
Electric Oven & Range w/8" Range Element	2,000	15	30.0	\$2.07
Oven: Broiler	3,200	15	48.0	\$3.31
Upright Freezer Energy Star	66	720	47.5	\$3.28
Chest Freezer, Energy Star	41	720	28.5	\$1.97
Refrigerator, Freezer-bottom	67	720	48.2	\$3.33
Refrigerator, Freezer-bottom Energy Star	52	720	37.9	\$2.62
Refrigerator w/ Freezer-bottom & Door Ice	77	720	55.4	\$3.82
Refrigerator w/ Freezer-bottom, & Door Ice, Energy Star	60	720	43.2	\$2.98
Refrigerator, Side-x-Side (SxS)	73	720	52.6	\$3.63
Refrigerator SxS Energy Star	57	720	41.0	\$2.83
Refrigerator SxS w/Door Ice	78	720	56.2	\$3.88
Refrigerator SxS w/Door Ice, Energy Star	61	720	43.9	\$3.03

For more information, call: (360) 565-3249

Heating & Air-Conditioning	Typical Wattage (Watts)	Avg. Hrs Usage/ Month	Avg. kWh/ Month	Typical Cost/ Month
Portable A.C. - 5,000 BTU	500	200	75.0	\$5.18
Window A.C. - 10,000 BTU	1,000	200	150.0	\$10.35
Dehumidifier - 65 pint	790	90	71.1	\$4.91
Dehumidifier, Whole-house, Energy Star	111	720	79.9	\$5.51
4' Baseboard	1,000	150	150.0	\$10.35
6' Baseboard	1,500	240	360.0	\$24.84
8' Baseboard -	2,000	240	480.0	\$33.12
Electric Forced Air Furnace	10,000	150	1500.0	\$103.50
Electric Forced Air Furnace	15,000	150	2250.0	\$155.25
Electric Wall Heater	1,500	150	225.0	\$15.53
Fan: Ceiling	100	360	36.0	\$2.48
Fan: Exhaust, Mid-size	150	60	9.0	\$0.62
Fan: Portable Box Fan -- 20"	100	180	18.0	\$1.24
Fan: Oscillating	125	180	22.5	\$1.55
Fan: Whole House	400	180	72.0	\$4.97
Fan: Dual Unit	200	180	36.0	\$2.48
Furnace Fan	350	300	105.0	\$7.25
Heat Pump -- Ductless --	3,600	180	648.0	\$44.71
Heat Pump -- Standard	5,000	150	750.0	\$51.75
Portable Heater Low Setting	750	120	90.0	\$6.21
Portable Heater Medium Setting	1,000	120	120.0	\$8.28
Portable Heater High Setting	1,500	120	180.0	\$12.42

Water Heating & Circulation	Typical Wattage (Watts)	Avg. Hrs Usage/ Month	Avg. kWh/ Month	Typical Cost/ Month
Aquarium Pump (10 Gal)	80	720	57.6	\$3.97
Aquarium Pump (50 Gal)	250	720	180.0	\$12.42
Bathtub w/Jets	75	20	6.8	\$0.47
Hot Tub Heater	5,000	180	900.0	\$62.10
Hot Tub Pump	1,000	30	30.0	\$2.07
H <sub>2</sub> O Filtration	440	65	28.6	\$1.97
H <sub>2</sub> O Heater: (30-50 Gal)	4,500	90	404.8	\$27.93
H <sub>2</sub> O Heater: (30-50 Gal) High Efficiency	4,500	85.6	385.0	\$26.57
H <sub>2</sub> O Heater: (80 Gal)	4,500	94	423.0	\$29.19
H <sub>2</sub> O Heater: (80 Gal) High Efficiency	5,500	70	385.2	\$26.58
Heat Pump H <sub>2</sub> O Heater (50 Gal)	600	240	144.0	\$9.94
Heat Pump H <sub>2</sub> O Heater (80 Gal)	655	240	157.0	\$10.83
Tankless H <sub>2</sub> O Heater: 2 Users	14,000	22.5	315.0	\$21.74
Tankless H <sub>2</sub> O Heater: 4 Users	28,000	34	952.0	\$65.69
Well Pump	660	60	39.6	\$2.73
<b>Laundry</b>				
Clothes Dryer	3,400	27	91.8	\$6.33
Top-load Washer	477	27	12.9	\$0.89
Top-load Washer Energy Star	322	36	11.6	\$0.80
Front-load Washer Energy Star	150	36	5.4	\$0.37
Front-load Washer "Most Efficient"	100	36	3.6	\$0.25

## Light Bulbs: think Lumens, not Watts

<b>Lumens</b> <i>More Lumens = Brighter</i>	800	1100	1600	2600
Old-fashioned Incandescents	60W	75W	100W	150W
Halogen Incandescents	43W	53W	72W	105W
Compact Fluorescents/CFLs	14W	18W	23W	36W
Light Emitting Diodes/LEDs	12W	14W	18W	N/A

Light Bulbs	Typical Wattage (Watts)	Avg. Hrs Usage/ Month	Avg. kWh/ Month	Typical Cost/ Month
800 Lumen Incandescent	60	240	14.0	\$0.99
800 Lumen Halogen	43	240	10.3	\$0.71
800 Lumen CFL	14	240	3.4	\$0.23
800 Lumen LED	12	240	2.9	\$0.20
1,100 Lumen Incandescent	75	240	18.0	\$1.24
1,100 Lumen Halogen	53	240	12.7	\$0.88
1,100 Lumen CFL	18	240	4.3	\$0.30
1,100 Lumen LED	14	240	3.4	\$0.23
1,600 Lumen Incandescent	100	240	24.0	\$1.66
1,600 Lumen Halogen	72	240	17.3	\$1.19
1,600 Lumen CFL	23	240	5.5	\$0.38
1,600 Lumen LED	18	240	4.3	\$0.30
2,600 Lumen Incandescent	150	240	36.0	\$2.48
2,600 Lumen Halogen	105	240	25.2	\$1.74
2,600 Lumen CFL	36	240	8.6	\$0.59
4' Fluorescent 2-bulb Fixture	100	240	24.0	\$1.66
High-Pressure Sodium Bulb	75	300	22.5	\$1.55
Mercury Vapor	150	300	45.0	\$3.11
<b>Bulb Longevity:</b> Incandescent = 750 - 1,000 hours    Halogen = 1,000 - 3,000 hours CFL= 8,000 - 12,000 hours    LED = 18,000 - 22,000 hours				

Home Theater	Typical Wattage (Watts)	Avg. Hrs Usage/ Month	Avg. kWh/ Month	Typical Cost/ Month
DVD Player	12	150	2.8	\$0.19
DVD Player -- Energy Star	6	150	1.3	\$0.09
HD DVR Set-Top Box	32	270	22.9	\$1.58
HD Receiver Set-Top Box	20	90	14.3	\$0.98
Satellite Dish	15	120	1.8	\$0.12
Surround-sound	6	75	0.5	\$0.03
35" LCD TV	65	150	10.1	\$0.70
35" LED TV	100	150	15.0	\$1.04
45" LCD TV	110	150	17.0	\$1.17
45" LED TV	127	150	19.1	\$1.31
46" Plasma TV	225	150	33.8	\$2.33
55" LCD TV	155	150	23.3	\$1.61
55" LED TV	165	150	25.3	\$1.75
54" Plasma TV	325	150	48.8	\$3.36
2013 Microsoft Xbox One	110	174	20.0	\$1.38
2010 Nintendo Wii	14	174	2.4	\$0.17
2013 Sony Playstation 4	137	171	24.2	\$1.67
<b>Office Equipment</b>				
Computer & Monitor	100	120	12.0	\$0.83
Laptop	21	90	1.9	\$0.13
Modem	6	180	1.1	\$0.08
Ink-jet (standby)	7	705	4.9	\$0.34
Ink-jet (printing)	64	15	1.0	\$0.07
Laser Printer (standby)	19	705	13.4	\$0.92
Laser Printer (printing)	130	15	2.0	\$0.13
Wireless Router	6	180	1.1	\$0.07